

**Products:**

RT-MA-004 – Bottle roller

**Accessories:**

- RD-MG-040/2 – Bottle type pycnometer with standard ground joint, 500 ml
- RD-MG-040/3 – Bottle type pycnometer with standard ground joint, 1000 ml
- RD-MG-040/4 – Bottle type pycnometer with standard ground joint, 2000 ml
- RD-MG-040/5 – Bottle type pycnometer with standard ground joint, 3000 ml
- RD-MG-040/C – Capillary tube with double edged funnel and ground joint for bottle type pycnometer
- RT-MB-003/B – Test bottle (Pyrex glass) with screw cap, 500 ml
- RT-MB-003/BR – Glass rod Ø 6 mm, one end fitted with 30 mm long rubber tube

**Standards:**

EN 12697-5, EN 12697-11

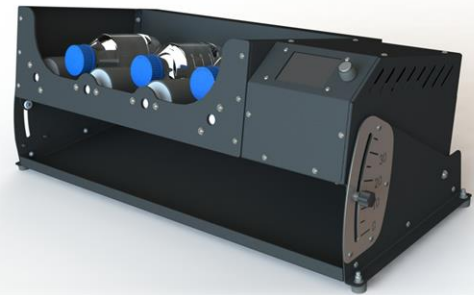
**Description:**

RT-MA-004 is an automatic bottle roller designed for expelling trapped air in asphalt mixture by rotating the pycnometer with sample and water. The roller can be used also for determining the affinity between mineral aggregates and bituminous binder after influence of mechanical stirring action in the presence of water. It is usable for pycnometers (bottles) from 500 ml to 3000 ml capacity.

The machine is equipped with a microcontroller that takes into account the bottle diameter to apply the correct rotation speed (up to 100 rpm) regardless of rolling resistance. The device equipped with digital display to set the test parameters and time programming.

RT-MA-004 has the ability to tilt the rollers at required angle from 0° to 35°, and has rubberized pimple-like rollers which prevent the pycnometers from sliding during the test.

Test pycnometers and bottles should be ordered separately.



**Technical specifications:**

Capacity	Up to 3 pycnometers/bottles 500 ml & 1000 ml cap. Up to 2 pycnometers/bottles 2000 ml & 3000 ml cap.
Bottle rotation speed	1-100 rpm
Test time	up to 99 h 59 min
Dimensions (LxWxH)	400x400x320 mm
Weight (approx.)	15 kg
Power supply	220-230 V, 50 Hz, 1 Ph